

RestoreADmin

Online Active Directory Restores & Scheduled Backups



Tired of taking your Domain Controllers (DCs) down for object restores? Wish you could recover objects and their attributes to previous states without ever going off line? Want a cost-effective method to get your users back online within minutes of a deletion? NetPro's RestoreADmin makes it all possible!

RestoreADmin allows you to immediately restore deleted objects and their attributes straight from your Active Directory Users and Computers (ADUC) interface, without taking your DCs or your users offline. And through easy-to-use Wizards, RestoreADmin enables administrators to create and schedule centralized backups, reducing the time required to recover from malicious or unintended deletions - all without scripts or manual effort. So you'll have users back online within minutes of the initial deletion - not hours or days.

Simplify Management & Eliminate Third-Party Interfaces

NetPro's RestoreADmin adds a Recycle Bin to Microsoft's familiar ADUC interface, allowing you to find, recover and rollback deleted objects and their attributes quickly and efficiently. Through innovative Wizards and tight integration with NetPro's ChangeAuditor, you'll have the tools and information you need to easily restore deleted objects now and avoid such mistakes in the future, thus reducing the risk of outages and eliminating time-consuming scripts and manual processes - all without breaking the bank.

Create & Schedule Centralized Backups of Active Directory

Accidental deletions by an administrator. Malicious deletions by an intruder. Object or attribute corruption. Object-deleting virus attacks. Active Directory - and the people and processes who rely upon it - are at risk each and every day. With NetPro's RestoreADmin, you'll have added peace-of-mind through the ability to create automated, centralized backups of Active Directory objects. RestoreADmin's incremental backup process backs up Active Directory objects to a central location at flexible user-defined schedules, letting you restore deleted objects or roll back an existing object to a previous state on your preferred schedule, while reducing recovery time, impact on users and overall service levels.

Generate Detailed Comparison Reports

Backup history and comparison reports provide clear-cut insights and graphical interpretations on backup performance, trending and metrics over specific time periods. And, with RestoreADmin's new "Post Operation Projection" report, you can preview future backups ... further accelerating and simplifying the restore process while providing greater visibility into your infrastructure.

*With **RestoreADmin**, not only will you save valuable time and reduce the risk of costly network outages, you'll also eliminate time-consuming scripts and manual processes - all without breaking the bank!*



Business Intelligence 101
Your Intelligent Source for Business Technology

Microsoft®
GOLD CERTIFIED

Partner

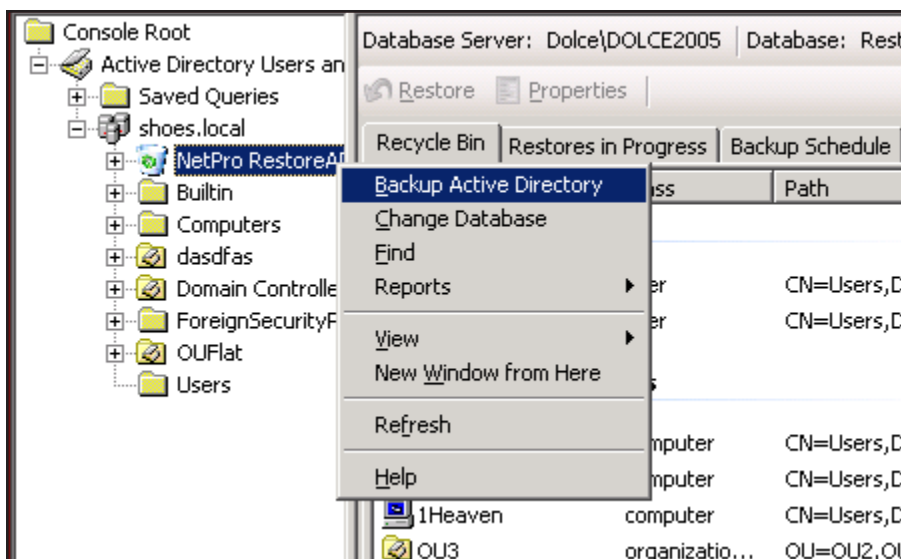
NETPRO

www.netpro.com

RestoreADmin at a Glance

- Allows** incremental (delta) backups to save network bandwidth
- Locates** deleted objects quickly with advanced grouping, sorting and search functionality
- Shows** Who, What, When and Where object deletion events
- Enables** attribute level restores and rollbacks
- Features** ability to recursively restore child objects
- Automates** re-creation and restoration of parent containers
- Replicates** restored objects to remote domains or specific sites
- Enables** comparison reporting of two backups or backup to Active Directory
- Provides** backup history and performance metrics for trending
- Offers** flexible backup profiles with enhanced scheduling options
- Automates** database maintenance for pruning of old data
- Includes** support for x64 Platforms for increased performance
- Integrates** with NetPro's ChangeAuditor

Accidental deletions can happen at any organization ... everyone makes a mistake. Can your company afford slow, manual restore processes? Let RestoreADmin make quick work of online restores as well as scheduled backups.



NetPro . . . The Experts Behind RestoreADmin

NetPro sets the Gold Standard for distributed infrastructure management. We build decades of experience into every enterprise solution, ensuring that our customers can manage the security, compliance and health of their Windows, DNS, MIIS, and Exchange environments with total, unparalleled confidence. Our solutions enable organizations to improve security and policy compliance, increase access availability, prevent costly disruptions, and enhance management efficiencies. NetPro counts the U.S. Army, General Electric, and Coors Brewing among its many customers.



Microsoft®
GOLD CERTIFIED

Partner



www.netpro.com